

## Forensic Engineering Investigation Services :

- *Traffic Accidents*
- *Marina Accidents*
- *Motorcycle Accidents*
- *Pedestrian Accidents*
- *Bicycle Accidents*
- *Slip-and-Falls*
- *Motion Dynamics*
- *Environmental Contamination*
- *Extensive Forensic Library*

## Clients Include:

- *Lawyers*
- *Insurance Companies*
- *Insurance Adjusters*
- *Government Ministries*



Latest Technological Forensic Services  
Years of Engineering Experience  
& Personal Service

## EPES

Evans Professional Engineering Services Ltd.  
6738 Ellen Place  
Nanaimo, British Columbia  
Canada V9V 1A2

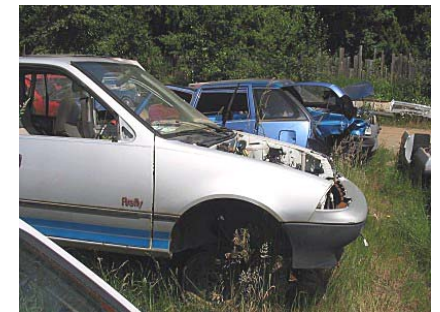
Office: 250-390-5181 Cell: 250-756-8581  
Fax: 250-390-5181

Email: [evanseng@island.net](mailto:evanseng@island.net)

Web: [EvansProfessionalEngineeringServices.com](http://EvansProfessionalEngineeringServices.com)

Forensic Accident  
Investigation  
Engineers

## EVANS PROFESSIONAL ENGINEERING SERVICES LTD.



*We Often Meet Our Friends  
by Accident*

## EPES

Web: [www.EvansProfessionalEngineeringServices.com](http://www.EvansProfessionalEngineeringServices.com)  
Office: 250-390-5181 ; Cell: 250-756-8581  
Fax: 250-390-5181

## EPES - Forensic Engineers & Investigative Services

Evans Professional Engineering Services Ltd has developed a broad range of expertise in the following aspects of Forensic Engineering & Investigative Services:

- **Traffic**
- **Transportation Road, Rail, Air, Sea**
- **Pedestrians**
- **School Zones**
- **Bicycles**
- **Motorcycles**
- **Slip-and-Falls**
- **Motion Dynamics**
- **Environmental Contamination**

### Our services include:

- On-site surveys
- Digital photography
- Video filming
- Speed analysis
- Physics in Motion
- Access to computer database research information SAE and NAFE
- Expert Witness testimony



## Accidents

EPES has experience in the investigation and analysis of a wide variety of accidents including car, commercial truck; bus; motorcycle ; bicycle; marine and marinas; railway; school zones and general liability including slip-and-falls, equipment failure or malfunction, and motion dynamics. They have provided Expert Witness testimony in British Columbia Supreme Court in the fields of civil, traffic, materials and geotechnical engineering. Some of their accident investigation and analysis has involved the special fields of age-related macular degeneration and sight/vision issues at nighttime for the elderly driver. Motor vehicle accident reconstruction of events is undertaken from crush energy analysis on body damage and skid measurements. They also provide critiques of engineering reports by others in the fields of forensic accident investigations, civil engineering, geotechnical engineering , materials engineering and environmental contamination & remediation. EPES has provided critical evidence in slip-and fall cases involving Shopping Mall floor surfaces and Marinas.

## Environmental Contamination

EPES has developed a niche expertise in the investigation analysis and bio-remediation of environmental contamination of soils and groundwaters. Many of their projects have involved various aspects of geo-environmental engineering including storm water & drainage/erosion studies; chemical contaminant analysis; fecal coliform contamination analysis and monitoring of safe swim beaches for Municipalities, Health Authorities and Port Authorities. EPES conducts investigations as well as remediations of accidental hydrocarbon spills resulting



**Speed Analysis for Traffic Accidents & Reconstruction**

from highway or municipal traffic accidents including major losses from fuel tankers and heavy commercial trucks. Their efforts in the past have prevented significant contamination of fish sensitive streams on behalf of their clients Insurance Corporation of British Columbia (ICBC) and the Provincial Ministry of Environment (Water Land & Air Protection).

## Professional Accreditations:

- Association of Professional Engineers of British Columbia, Alberta, Yukon & NWT
- National Academy of Forensic Engineers USA (NAFE)
- Society of Automotive Engineers North Am. (SAE)
- Institute of Transportation Engineers (ITE)
- Listed as a Member of the Expert Witness Council for ITE at [www.ite.org](http://www.ite.org)

**EPES**

**Evans Professional Engineering Services Ltd.**  
6738 Ellen Place  
Nanaimo, British Columbia  
Canada V9V 1A2

Office: 250-390-5181 Cell: 250-756-8581  
Fax: 250-390-5181

Email: [evanseng@island.net](mailto:evanseng@island.net)  
Web: [EvansProfessionalEngineeringServices.com](http://EvansProfessionalEngineeringServices.com)